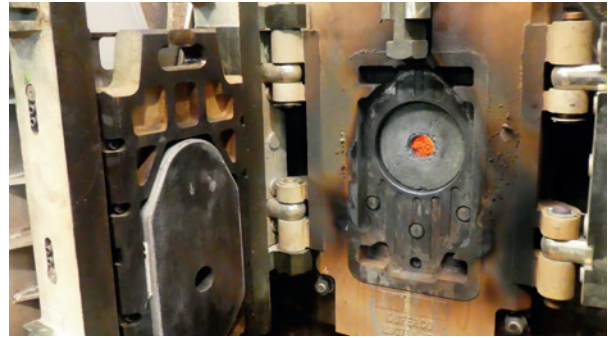
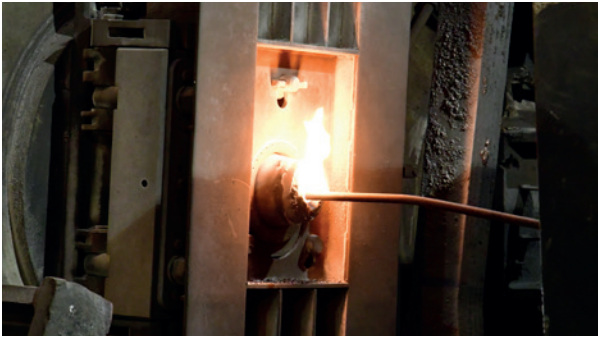


STEEL FLOW CONTROL



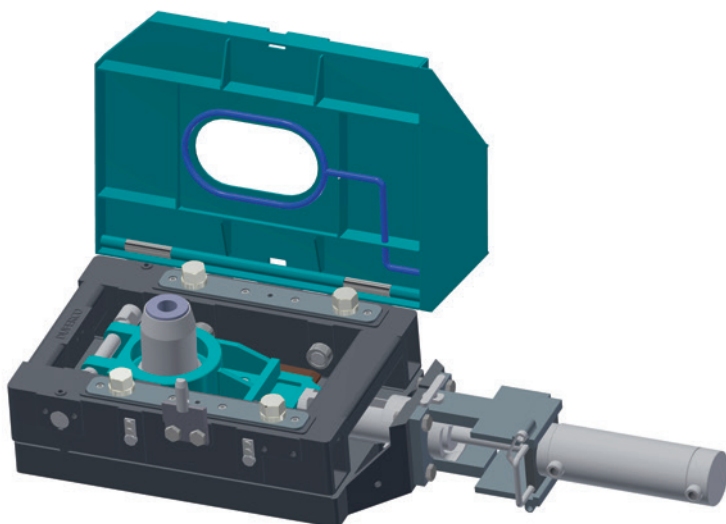
DITH REFRACTORIES

Strong and safe mechanisms

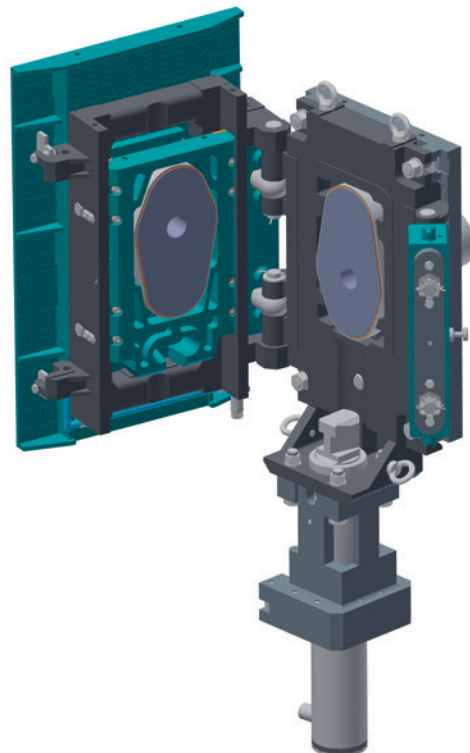


- › Maintenance operations are user friendly and fast.
- › An efficient air-cooling device increases lifetime of spare parts and of the complete mechanism.
- › Box spring units are in an insulated structure avoiding overheating problems.

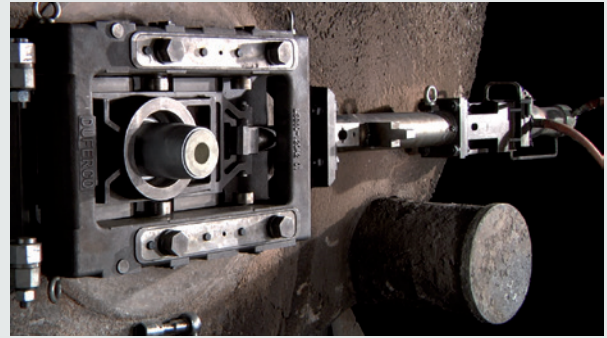
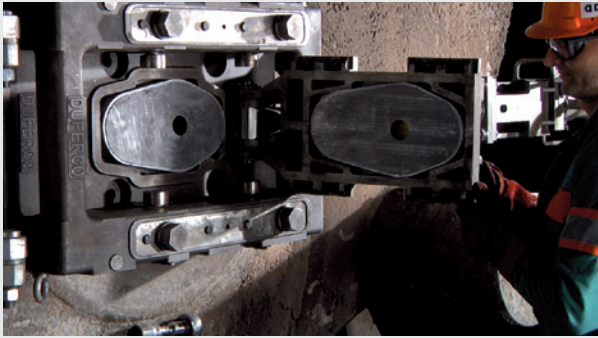
FRAME MODEL



SIDE HINGE MODEL



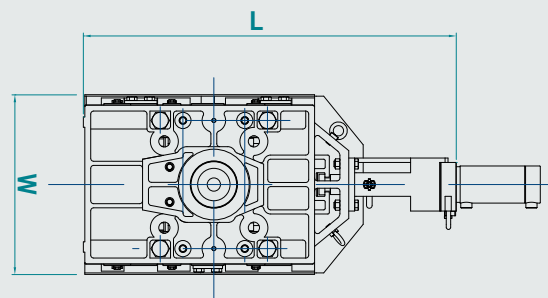
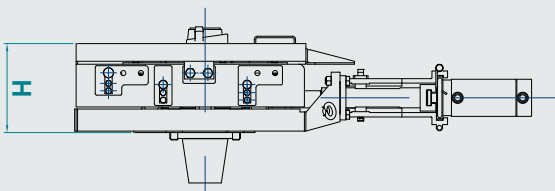
Easy to use and always reliable



- › 2 box spring units only
- › 3 main components only
- › Fast plate changing operation

TECHNICAL PARAMETERS

System Type	System mounted	Type	Working stroke path [mm]	Hot repairing stroke path [mm]	Max bore Dia. [mm]	Quantity of spring assembly	Length L [mm]	Width W [mm]	Height H [mm]	Ladle capacity [ton]
FRAME MODEL	horizontal	LSG650-110	110	-	55	6	1130	520	317	<50
		LSG660-120	120	190	60	8	1140	544	318	50-100
		LSG670-150	150	220	70	8	1290	563	332	70-150
	vertical	LSG680-180	180	255	80	12	1290	628	345	100-200
	vertical	LSG60U-120	120	190	60	8	1140	544	318	50-100
SIDE HINGE MODEL	vertical	LSG665U-120	120	165	60	8	1301	566	333	50-100
		LSG665D-120	120	165	60	8	1301	566	333	50-100
		LSG75U-170	170	215	75	10	1472	706	365	100-200
		LSG75D-170	170	215	75	10	1472	706	362	100-200





DUFERCO SA

Via Bagutti 9, 6900 Lugano | Switzerland



+41 91 822 56 00



info.refractories@dith.com



www.dithrefractories.com

Edition 03/2020